

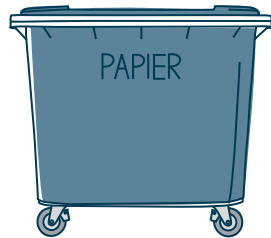
# WASTE SEPARATION DO IT RIGHT:

## BLUE BIN PAPER WASTE

- Letters
- Books (without cover)
- Wrapping paper (uncoated)
- Catalogues
- Packing paper
- Exercise books
- Writing paper
- Circulars
- Magazines
- Newspapers

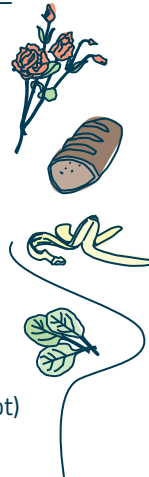


Please press cardboard packaging down flat and crush!

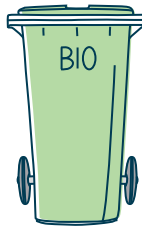


## GREEN BIN ORGANIC WASTE

- Egg shells
- Garden waste
- Fish bones
- Coffee filters
- Small animal litter
- Kitchen towel
- Paper tissues
- Napkins
- Tea bags
- Potted plants (without pot)



Do not throw plastic bags in too!



## YELLOW BIN/SACK PACKAGING

- Aluminium cans
- Metal packaging
- Film
- Drinks cartons (e.g., milk/juice containers)
- Plastic bottles (e.g., washing up liquid)
- Plastic cups
- Plastic fasteners
- Polystyrene (from packaging)
- Composite material



Please make yellow sacks freely available for collection on the day.



## BLACK BIN RESIDUAL WASTE

- Ash
- Audio, video cassettes
- Lightbulbs
- Bones
- Toiletries
- Sweepings
- Porcelain
- Dishwashing sponges
- Vacuum cleaner bags
- Nappies
- Toothbrushes
- Cigarettes



Small volumes lower costs.



## IMPORTANT CONTACT INFORMATION

### BULKY WASTE

Appointments upon request

T 09131 86 20 14

E [sperrmuell@stadt.erlangen.de](mailto:sperrmuell@stadt.erlangen.de)

### UMWELT- U. ABFALLBERATUNG (ENVIRONMENT AND WASTE ADVICE CENTRE)

Schuhstr. 40 | 91052 Erlangen

T 09131 86 29 39

E [umweltamt@stadt.erlangen.de](mailto:umweltamt@stadt.erlangen.de)

### GGFA - SECOND-HAND GOODS SHOP

Alfred-Wegener-Str. 11 | 91052 Erlangen

T 09131 9200-4500

### WASTE TRANSFER FACILITY

Am Hafen 5a | 91052 Erlangen

T 09131 99 26 00

### ERLANGER VERSCHENK-UND TAUSCHBÖRSE

(USED GOODS COLLECTION CENTRE AND EXCHANGE)

[www.erlangen.de/tausch](http://www.erlangen.de/tausch)

  
**PLEASE TURN OVER**

# DO NOT PUT IN THE BIN:



## OLD GLASS CONTAINER

- Disposable bottles
- Jars
- Bottles

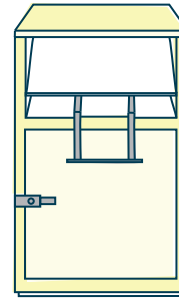
Please separate according to colour, no mirrors, no ceramics, no lightbulbs! Please note the opening hours: Mon – Sat from 7.00 a.m. – 7.00 p.m.



## OLD CLOTHES CONTAINER

- Clothing
- Duvets
- Shoes
- Curtains

Or bring them to  
a used clothes collection.

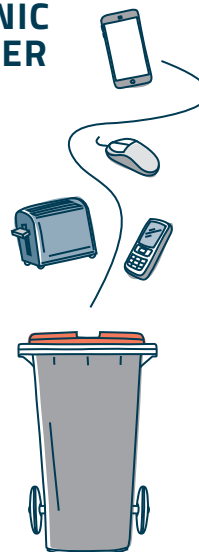


## SMALL ELECTRONIC DEVICE CONTAINER

- Mobile phones
- Razors
- Walkmans
- Telephones
- Answering machines
- Smoke alarms
- Electronic tools
- Game consoles

Please no energy-saving  
lightbulbs!

Remove battery pack!



## SPECIAL WASTE TYPE AND WHERE TO PUT IT

- **Waste medicines**  
Residual waste
- **Old tyres**  
Tyre dealer
- **Batteries**  
Any merchant
- **Gas cylinders**  
Manufacturer
- **All electronic appliances**  
(e.g., fridges/freezers monitors, TV appliances, computers)  
Waste transfer facility
- **Used furniture** (in good condition)  
Second-hand furniture shop
- **Bulky waste**  
Waste transfer facility
- **Renovation waste**  
Waste transfer facility
- **Animal carcasses**  
ZV-TBN (carcass removal service)  
T 09549 366

## COLLECTION OF HARMFUL SUBSTANCES WASTE TRANSFER FACILITY

- Chemicals
- Energy-saving lightbulbs
- Frying fat
- Antifreeze
- Adhesives, glue
- Fluorescent tubes, LEDs
- Plant fertilisers
- Pesticides
- Detergents
- Acids, alkalis
- Spray cans with contents
- Thermometers
- Individual car batteries

**Bring waste oil  
back to the dealer!**

